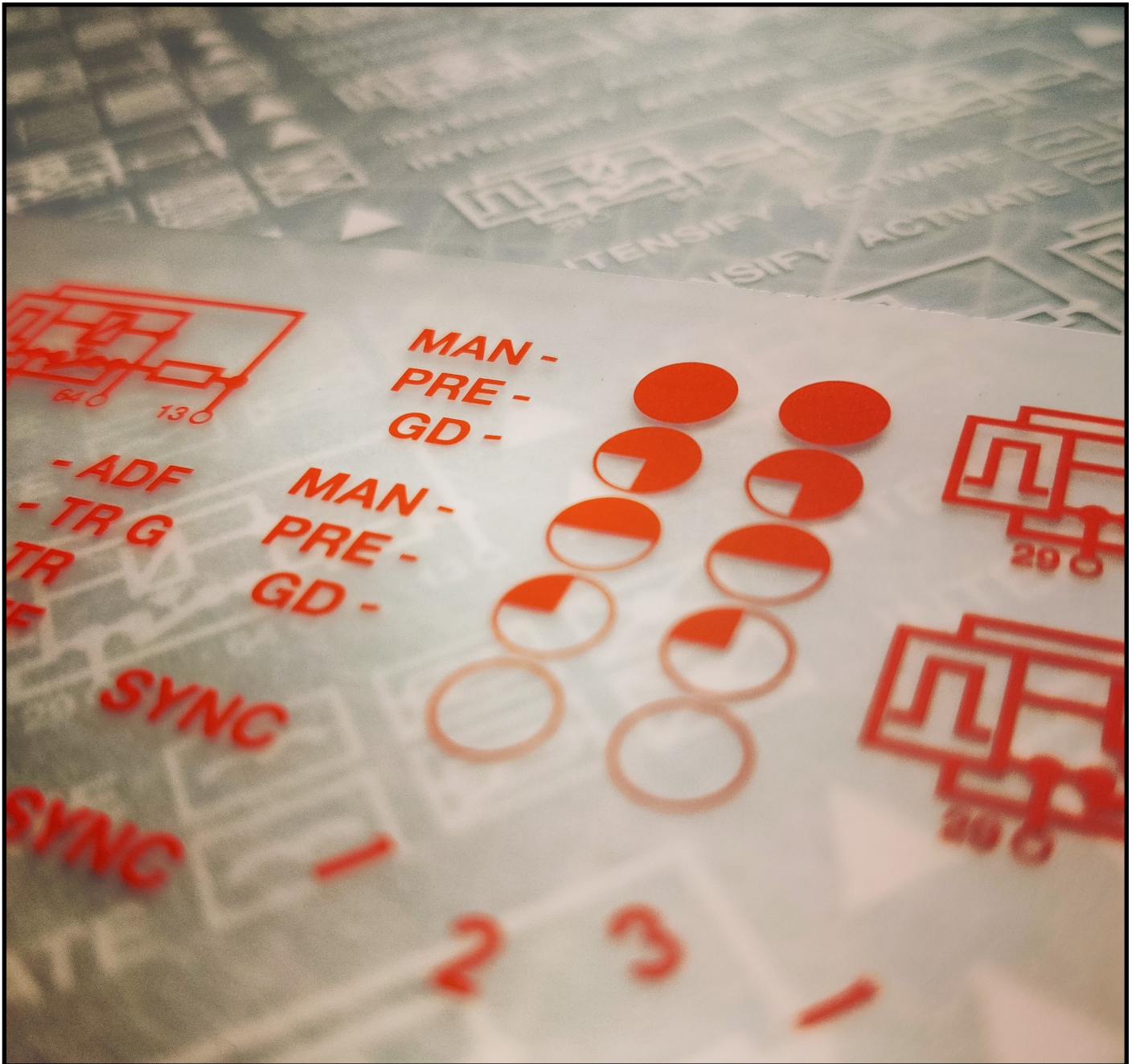


# ECTØLABELS

## Dry Transfer Decal Set



Installation Guide

v1.1 - July 2022

# INTRODUCTION

The **EctoLabs Dry Transfer Decal Set** contains fifteen individual graphical decals designed to provide the finishing touch to your Neutrona Wand, Ghost Trap and Proton Pack builds. Each graphic has been carefully recreated using reference photos of the original screen-used props to ensure their accuracy in both colour and dimension.

Unlike waterslide decals or regular stickers, these dry transfers feature incredibly crisp graphics that have no visible or raised edges - allowing you to achieve a superior 'printed on' look every time.

It is also worth noting that there is one spare of each graphic in this set which can be used in case of any mistakes, or to replace any existing worn out decals.

## ABOUT YOUR DRY TRANSFERS

Your transfer set contains two individual sheets of graphical decals – one in red, and one in white. These decals can be applied to the surface of your replica prop quickly and easily using only simple tools, with no need for any water or separate adhesives.

The decals are attached to a transparent silicone carrier that holds them in place until they are transferred to the surface of the prop. The underside of each decal has a coating of pressure-sensitive adhesive which is activated by burnishing from the top via the silicone sheet. The heat and pressure generated by this process causes the decal to stick strongly to the surface and allows for the silicone sheet to be peeled away, leaving only the decal permanently in place.

A thin paper backing is also included with each transfer sheet – this is to protect the decals from accidental burnishing before they are ready to be used.



### IMPORTANT

**Dry transfers are very delicate, so always handle them with great care. Never touch the underside of the decals with your fingers and only hold them by the edges of the silicone carrier. To avoid spoiling the decals, do not apply any pressure to the sheets until you are ready to burnish them to your prop.**

**Please also bear in mind that unused dry transfers have a limited life span, so be sure to use them as soon as possible for the very best results.**



# DECAL PLACEMENT

Below are our suggested placements for each of the included decals. For examples of how these were used on the original screen-used props, we highly recommend visiting **The Ghostbusters Reference Library** on Facebook:

<https://www.facebook.com/groups/theghostbustersreferencelibrary/media/albums>



**NEUTRONA WAND:** Toggle switch icons\* and bargraph indicator



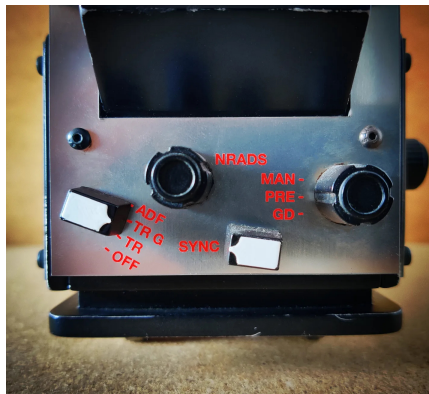
**NEUTRONA WAND:** Top dial numerics and positional arrow



**NEUTRONA WAND:** Trigger box labels: 'INTENSIFY' and 'ACTIVATE'



**NEUTRONA WAND:** Gun box side circuit diagram



**GHOST TRAP:** Front panel knob positional labels†



**GHOST TRAP:** Side knob positional arrow



**GHOST TRAP (PEDAL):** Metal Hammond box circuit diagram



**PROTON PACK:** N-Filter circuit diagram‡

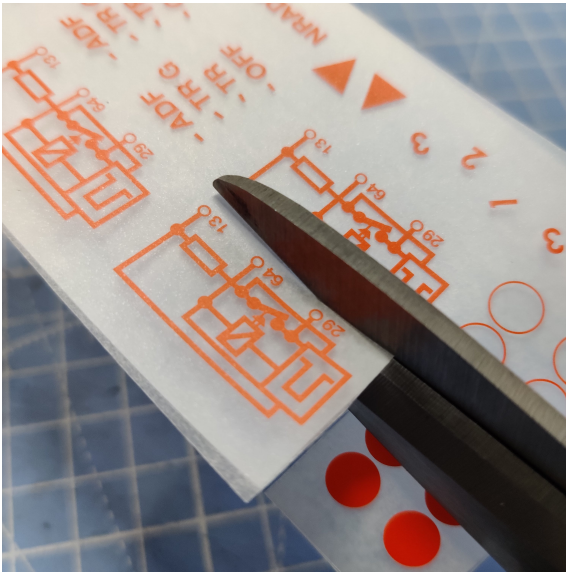
\* Pictured is the 'Super Hero' variation of the rectangular switch icons. Other screen-used Neutrons Wands used different arrangements of these icons, including a third design (which is also included in this set).

† The red knob labels were only seen on the traps used in Ghostbusters 2. For an accurate GB1 trap, these should not be used.

‡ This photo shows the heavily weathered screen-used Spengler/Phoebe hero pack from Ghostbusters: Afterlife.

# INSTALLATION INSTRUCTIONS

Applying the decals to your props is a quick and easy process. Using only simple tools, follow the steps below to achieve the perfect result every time...



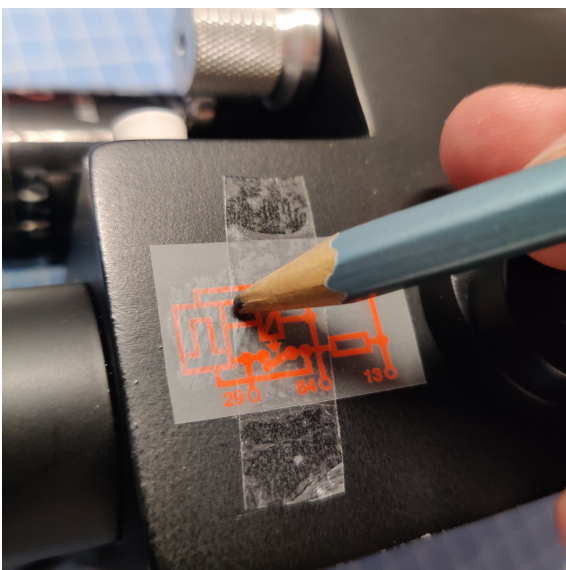
## 1. CUT

Using a pair of sharp scissors, cut out your required decal. Make sure you cut through both the silicone carrier and the protective paper sheet. Be careful not to damage any of the other decals as you cut. Always keep the paper sheet underneath the transfer until you are ready to install it on your prop.



## 2. POSITION

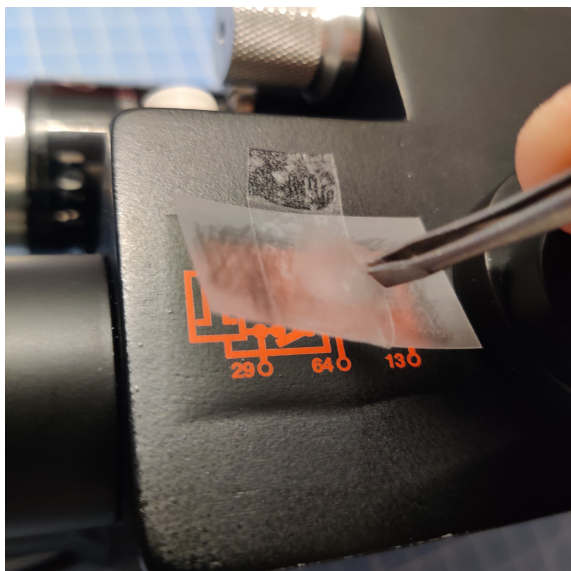
Place a strip of clear tape over the top of the decal you have cut out - be sure to use a low tack tape to protect against any surface damage to your prop. Remove the paper backing and position the transfer until the graphic is in the desired position on your prop. Adjust if necessary. Do not apply any pressure to the transfer until you are happy with its placement.



## 3. BURNISH

Use a blunt pencil to apply even pressure over the entire footprint of the graphic. Scribble quickly over the transfer until all parts of the graphic have been burnished. You can also use a ballpoint pen or dedicated tool for this, however the lead of a pencil provides a good visual reference to where you have burnished.





## 4. PEEL

With the decal fully burnished, it should now have fully adhered to the surface of your prop. Carefully lift the tape and slowly remove the silicone carrier sheet, making sure to not damage any paint as you do so. Your decal should now have been evenly applied to your prop. If there are any loose sections, place the silicone sheet back over the decal and apply a little more pressure over the affected area.



## 5. FINISH

With your decal now successfully applied, we recommend spraying a coat or two of clear lacquer over the top to seal in the decal and help protect it from rubbing off. Use a clear coat that is correct to the surface finish of your prop.

# ECTØLABS

[www.ectolabs.net](http://www.ectolabs.net)